

APEX

design Sacha LAKIC

rochebobois
PARIS



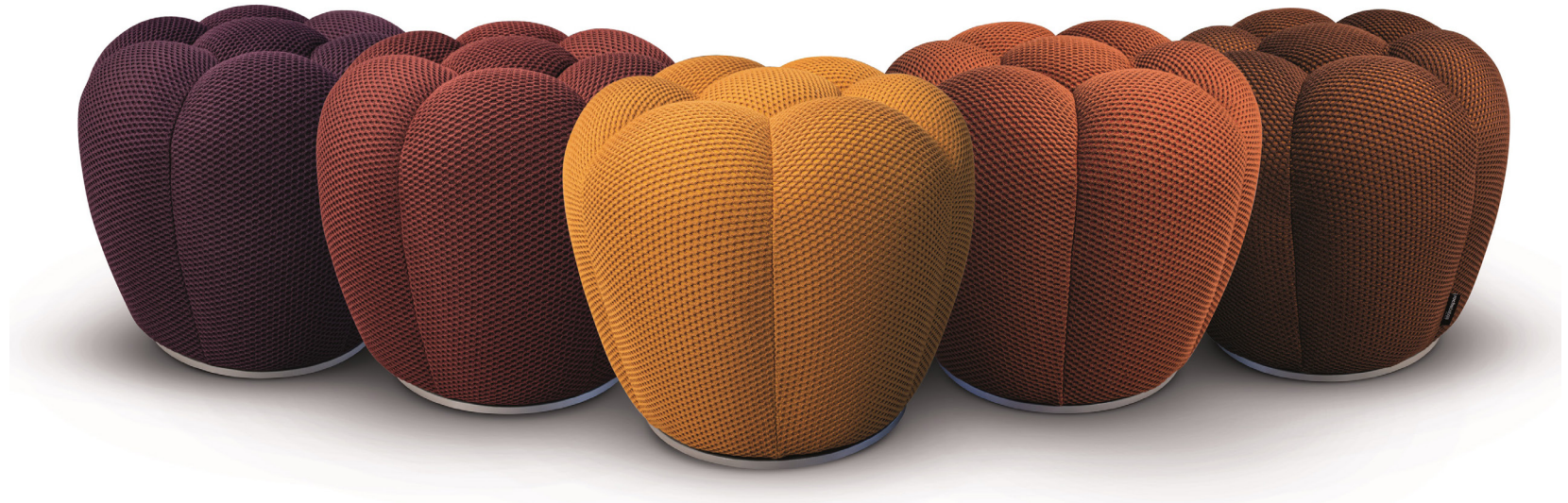
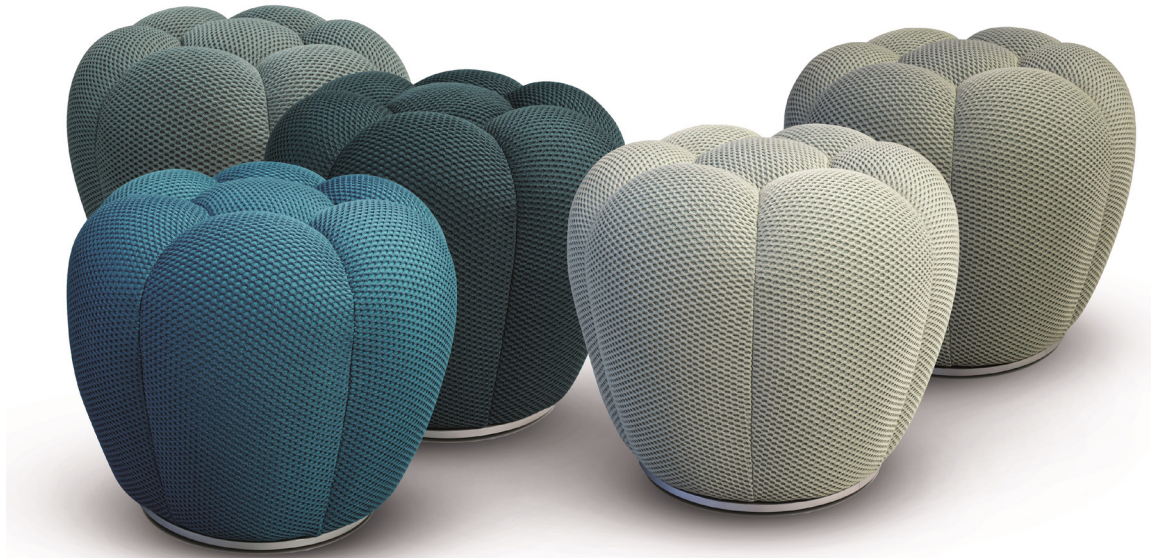
APEX

design Sacha LAKIC

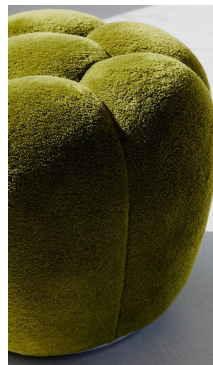


APEX

design Sacha LAKIC



design Sacha LAKIC



FICHE TECHNIQUE / TECHNICAL SPECIFICATIONS / FICHA TECNICA:

Structure : Sapin massif, multiplis de pin, panneaux de particules (CARB)
Assise : Mousse polyuréthane bi-densité 45-23 kg/m³
Piétement : MDF ; contour ABS, finition aluminium satiné

Structure: Solid fir wood, pine plywood, engineered composite wood (CARB)
Seat: bi-density polyurethane foam 45-23 kg/m³
Base: MDF; ABS edge, satin aluminum finish

Estructura: Abeto macizo, multilaminado de pino, paneles de partículas (CARB)
Asiento: Espuma poliuretano bi-densidad 45-23 kg/m³
Pata: MDF; contorno ABS, acabado aluminio satinado

OBSERVATIONS / OBSERVATIONS / OBSERVACIONES :

- Fabrication Européenne
- Entièrement capitonné
- Modèle réalisable uniquement en tissus Câlin, Chroma, Douceur, Techno 2D, Techno 3D, Techno 4D, Orsetto Flex et Marshmallow Uni
- Manufactured in Europe
- Entirely padded
- This model can only be upholstered in Câlin, Chroma, Douceur, Techno 2D, Techno 3D, Techno 4D, Orsetto Flex and Marshmallow Uni fabrics
- Fabricación europea
- Totalmente capitonné
- Modelo realizable únicamente en las telas Câlin, Chroma, Douceur, Techno 2D, Techno 3D, Techno 4D, Orsetto Flex y Marshmallow Uni

41 Pouf
Ottoman
Puf

